

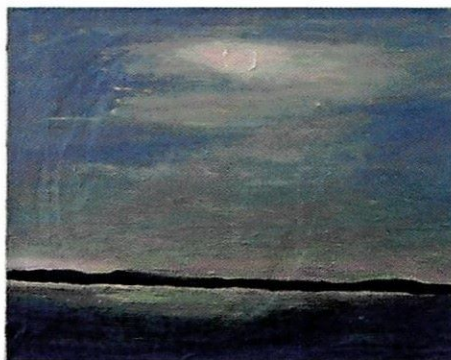
# Border Crossing

A SERIES OF new works by abstract painter Su Kwak will debut at June Kelly Gallery this month. Titled “Crossing Boundaries,” the exhibition focuses on the painter’s consciousness of light and the boundaries that appear as a result of that consciousness.

In *Fire of Love*, a purple and blue sea sits beneath a swirling, rosy sky with a warm pink

sun emanating yellow light. The light here is dynamic and multi-faceted, moving up into the top of the canvas as well as reflecting off the sea.

*Waiting in Silence* seems almost the inverse of this image—



here, Kwak uses a primarily cool, blue palette to create a similar image of sea and sky, with a dark horizon line toward the bottom third of the canvas. Above, a glowing moon is mostly hidden by soft blue

and pale yellow clouds.

And in *Compassion*, the central focus is not the landscape, but the source of light: a ball of soft pink, yellow, and white that radiates out into vibrant red and orange circles against a deep pink background. Below, a deep red creates a boundary that divides the light from the black darkness at

the very bottom of the canvas.

Each of these landscapes is painted from memory, both visual and emotional, Kwak says. “I absorb what I am seeing, and then back in my studio I paint from memory—not from sketches or photographs. I am interested in how memory works in the mind.”

